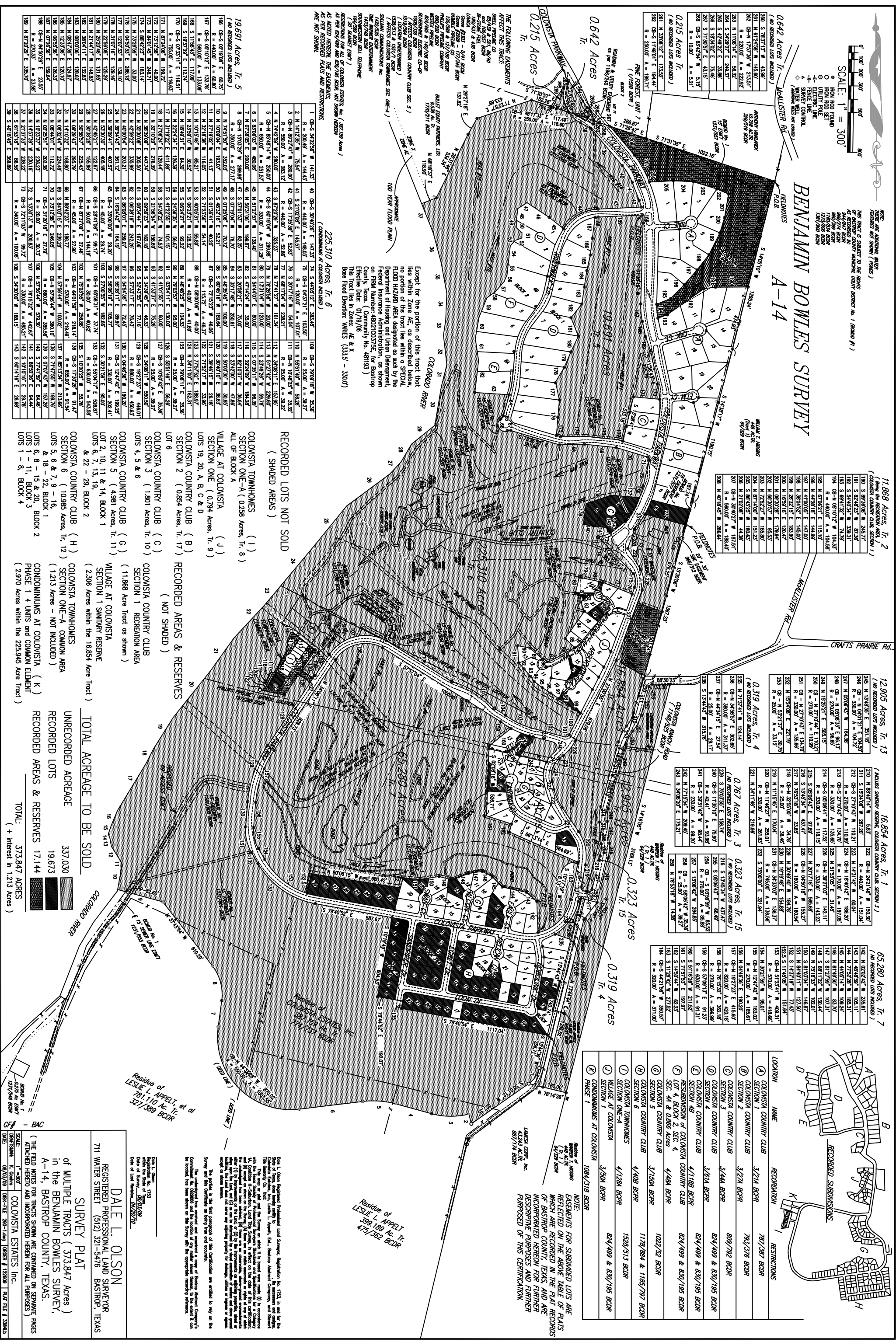


BENJAMIN BOWLES SURVEY
A-14

NOTE: SEE ADJACENT MAPS FOR RECORDS AND SURVEY INFORMATION.
THIS SURVEY IS SUBJECT TO THE RIGHTS OF RECORD OR UNRECORDED INTERESTS IN THE PUBLIC RECORDS OF BASTROP COUNTY, TEXAS.
THE BOUNDARIES OF THIS SURVEY ARE BASED UPON THE SURVEY DATA AND FIELD NOTES ON FILE AT THE BASTROP COUNTY CLERK'S OFFICE.
THE BOUNDARIES OF THIS SURVEY ARE BASED UPON THE SURVEY DATA AND FIELD NOTES ON FILE AT THE BASTROP COUNTY CLERK'S OFFICE.



19.691 Acres, Tr. 5
(NO RECORDED LOTS INCLUDED)

1	08-S-3472256	W 141.33	40	08-S-3070258	E 147.33	74	S 4450512	E 303.45	109	08-S-7909118	W 35.36
2	N 1417235	W 75.54	41	S 2102108	E 145.57	75	08-S-0437211	E 103.50	110	R = 25.00	A = 29.27
3	08-N-872747	W 280.00	42	08-S-1735239	E 52.83	76	S 2071716	W 54.04	111	08-N-1048233	W 35.37
4	N 1424298	W 280.00	43	08-S-0720238	W 325.25	77	N 7741277	W 181.34	112	N 4008111	E 157.95
5	08-N-874814	W 280.00	44	08-S-6019104	W 299.88	78	N 7628566	W 20.00	113	S 5242206	W 229.60
6	S 8200208	W 480.00	45	N 5127237	W 138.40	81	S 5444074	W 80.00	114	S 0729111	W 96.39
7	08-N-1503238	W 280.00	46	N 5631098	W 182.45	82	S 4741234	W 30.00	115	S 2874708	W 184.28
8	08-N-1503238	W 280.00	47	S 5701534	W 182.45	83	S 2028211	E 75.00	116	S 8210071	W 36.64
9	N 7451507	W 320.00	48	S 0729104	W 78.00	84	S 3571748	W 250.81	117	S 2242007	W 47.86
10	N 7070104	W 320.00	49	S 0729104	W 70.72	85	S 4625454	W 108.64	118	S 5004007	W 30.65
11	N 2718208	W 411.33	50	S 0729104	W 40.20	86	S 6076118	W 108.64	119	S 3040107	W 26.18
12	N 2718208	W 411.33	51	S 0729104	W 54.14	87	08-S-7215237	W 46.08	120	S 3846118	W 26.18
13	N 1071546	W 621.17	52	S 0729104	W 54.14	88	08-N-1167118	W 40.00	121	S 3792118	W 33.86
14	N 1071546	W 621.17	53	S 0729104	W 54.14	89	08-N-1167118	W 40.00	122	S 3792118	W 33.86
15	N 1071546	W 621.17	54	S 0729104	W 54.14	90	08-N-1167118	W 40.00	123	S 3792118	W 33.86
16	N 1071546	W 621.17	55	S 0729104	W 54.14	91	08-N-1167118	W 40.00	124	08-N-1167118	W 33.86
17	N 1071546	W 621.17	56	S 0729104	W 54.14	92	08-N-1167118	W 40.00	125	08-N-1167118	W 33.86
18	N 1071546	W 621.17	57	S 0729104	W 54.14	93	08-N-1167118	W 40.00	126	08-N-1167118	W 33.86
19	N 2718208	W 411.33	58	S 0729104	W 54.14	94	S 4101534	W 80.00	127	08-S-1050421	W 35.37
20	N 2718208	W 411.33	59	S 0729104	W 54.14	95	S 5438222	W 74.53	128	08-S-1050421	W 35.37
21	N 2718208	W 411.33	60	S 0729104	W 54.14	96	S 0924344	W 182.18	129	S 3478111	W 50.50
22	N 2718208	W 411.33	61	S 0729104	W 54.14	97	S 5243454	W 77.16	130	08-S-1972337	W 44.01
23	N 2718208	W 411.33	62	S 0729104	W 54.14	98	S 0828118	W 74.53	131	08-S-1972337	W 44.01
24	N 2718208	W 411.33	63	S 0729104	W 54.14	99	S 0828118	W 74.53	132	08-S-1972337	W 44.01
25	N 2718208	W 411.33	64	S 0729104	W 54.14	100	S 0828118	W 74.53	133	08-S-1972337	W 44.01
26	N 2718208	W 411.33	65	S 0729104	W 54.14	101	08-S-1972337	W 44.01	134	08-S-1972337	W 44.01
27	N 2718208	W 411.33	66	S 0729104	W 54.14	102	08-S-1972337	W 44.01	135	08-S-1972337	W 44.01
28	N 2718208	W 411.33	67	S 0729104	W 54.14	103	08-S-1972337	W 44.01	136	08-S-1972337	W 44.01
29	N 2718208	W 411.33	68	S 0729104	W 54.14	104	08-S-1972337	W 44.01	137	08-S-1972337	W 44.01
30	N 2718208	W 411.33	69	S 0729104	W 54.14	105	08-S-1972337	W 44.01	138	08-S-1972337	W 44.01
31	N 2718208	W 411.33	70	S 0729104	W 54.14	106	08-S-1972337	W 44.01	139	08-S-1972337	W 44.01
32	N 2718208	W 411.33	71	S 0729104	W 54.14	107	08-S-1972337	W 44.01	140	08-S-1972337	W 44.01
33	N 2718208	W 411.33	72	S 0729104	W 54.14	108	08-S-1972337	W 44.01	141	08-S-1972337	W 44.01
34	N 2718208	W 411.33	73	S 0729104	W 54.14	109	08-S-1972337	W 44.01	142	08-S-1972337	W 44.01
35	N 2718208	W 411.33	74	S 0729104	W 54.14	110	08-S-1972337	W 44.01	143	08-S-1972337	W 44.01
36	N 2718208	W 411.33	75	S 0729104	W 54.14	111	08-S-1972337	W 44.01	144	08-S-1972337	W 44.01
37	N 2718208	W 411.33	76	S 0729104	W 54.14	112	08-S-1972337	W 44.01	145	08-S-1972337	W 44.01

225.310 Acres, Tr. 6
(CONDOMINIUMS AT COLONISTIA INCLUDED)

Except for the portion of this tract that lies within Zone A-E, as described below, no portion of this tract lies within a SPECIAL FLOOD HAZARD AREA designated as such by the Department of Housing and Urban Development, Federal Insurance Administration, as shown on FEMA Number 480203252E, for Bastrop County, Texas. (Community No. 481153)

This tract lies in Zones A-E & X
Bee Flood Elevation: VARIES (333.5' - 330.0')

RECORDED LOTS NOT SOLD
(SHADED AREAS)

COLONISTIA TOWNHOMES (I)
SECTION ONE-A (0.258 Acres, Tr. 8)
ALL OF BLOCK A

VILLAGE AT COLONISTIA (J)
SECTION ONE (0.794 Acres, Tr. 9)
LOTS 19, 20, A, B, C & D

COLONISTIA COUNTRY CLUB (B)
SECTION 2 (0.854 Acres, Tr. 17)
(NOT SHADED)

COLONISTIA COUNTRY CLUB (C)
SECTION 3 (1.801 Acres, Tr. 10)

COLONISTIA COUNTRY CLUB (G)
SECTION 4 (4.981 Acres, Tr. 11)
LOTS 6, 7, 13, 19

COLONISTIA COUNTRY CLUB (H)
SECTION 5 (1.801 Acres, Tr. 10)
& 22 - 29, BLOCK 2

COLONISTIA COUNTRY CLUB (K)
SECTION 1 (1.213 Acres - NOT INCLUDED)

CONDOMINIUMS AT COLONISTIA (K)
PHASE 1 4 UNITS and COMMON ELEMENT
(2.970 Acres within the 225.945 Acre Tract)

RECORDED AREAS & RESERVES
(NOT SHADED)

COLONISTIA COUNTRY CLUB
SECTION 1 RECREATION AREA
(11.888 Acre Tract as shown)

VILLAGE AT COLONISTIA
SECTION 1 SANITARY RESERVE
(2.306 Acres within the 16.854 Acre Tract)

TOTAL ACREAGE TO BE SOLD

UNRECORDED ACREAGE

RECORDED LOTS

RECORDED AREAS & RESERVES

TOTAL: 373.847 ACRES
(+ interest in 1.213 Acres)

11.868 Acres, Tr. 2
(NO RECORDED LOTS INCLUDED)

190	S 8735008	W 74.53	201	S 8735008	W 74.53
191	S 8735008	W 74.53	202	S 8735008	W 74.53
192	S 8735008	W 74.53	203	S 8735008	W 74.53
193	S 8735008	W 74.53	204	S 8735008	W 74.53
194	S 8735008	W 74.53	205	S 8735008	W 74.53
195	S 8735008	W 74.53	206	S 8735008	W 74.53
196	S 8735008	W 74.53	207	S 8735008	W 74.53
197	S 8735008	W 74.53	208	S 8735008	W 74.53
198	S 8735008	W 74.53	209	S 8735008	W 74.53
199	S 8735008	W 74.53	210	S 8735008	W 74.53
200	S 8735008	W 74.53	211	S 8735008	W 74.53
201	S 8735008	W 74.53	212	S 8735008	W 74.53
202	S 8735008	W 74.53	213	S 8735008	W 74.53
203	S 8735008	W 74.53	214	S 8735008	W 74.53
204	S 8735008	W 74.53	215	S 8735008	W 74.53
205	S 8735008	W 74.53	216	S 8735008	W 74.53
206	S 8735008	W 74.53	217	S 8735008	W 74.53
207	S 8735008	W 74.53	218	S 8735008	W 74.53
208	S 8735008	W 74.53	219	S 8735008	W 74.53
209	S 8735008	W 74.53	220	S 8735008	W 74.53
210	S 8735008	W 74.53	221	S 8735008	W 74.53
211	S 8735008	W 74.53	222	S 8735008	W 74.53
212	S 8735008	W 74.53	223	S 8735008	W 74.53
213	S 8735008	W 74.53	224	S 8735008	W 74.53
214	S 8735008	W 74.53	225	S 8735008	W 74.53
215	S 8735008	W 74.53	226	S 8735008	W 74.53
216	S 8735008	W 74.53	227	S 8735008	W 74.53
217	S 8735008	W 74.53	228	S 8735008	W 74.53
218	S 8735008	W 74.53	229	S 8735008	W 74.53
219	S 8735008	W 74.53	230	S 8735008	W 74.53
220	S 8735008	W 74.53	231	S 8735008	W 74.53
221	S 8735008	W 74.53	232	S 8735008	W 74.53
222	S 8735008	W 74.53	233	S 8735008	W 74.53
223	S 8735008	W 74.53	234	S 8735008	W 74.53
224	S 8735008	W 74.53	235	S 8735008	W 74.53
225	S 8735008	W 74.53	236	S 8735008	W 74.53
226	S 8735008	W 74.53	237	S 8735008	W 74.53
227	S 8735008	W 74.53	238	S 8735008	W 74.53
228	S 8735008	W 74.53	239	S 8735008	W 74.53
229	S 8735008	W 74.53	240	S 8735008	W 74.53
230	S 8735008	W 74.53	241	S 8735008	W 74.53
231	S 8735008	W 74.53	242	S 8735008	W 74.53
232	S 8735008	W 74.53	243	S 8735008	W 74.53
233	S 8735008	W 74.53	244	S 8735008	W 74.53
234	S 8735008	W 74.53	245	S 8735008	W 74.53
235	S 8735008	W 74.53	246	S 8735008	W 74.53
236	S 8735008	W 74.53	247	S 8735008	W 74.53
237	S 8735008	W 74.53	248	S 8735008	W 74.53
238	S 8735008	W 74.53	249	S 8735008	W 74.53
239	S 8735008	W 74.53	250	S 8735008	W 74.53
240	S 8735008	W 74.53	251	S 8735008	W 74.53
241	S 8735008	W 74.53	252	S 8735008	W 74.53
242	S 8735008	W 74.53	253	S 8735008	W 74.53
243	S 8735008	W 74.53	254	S 8735008	W 74.53
244	S 8735008	W 74.53	255	S 8735008	W 74.53
245	S 8735008	W 74.53	256	S 8735008	W 74.53
246	S 8735008	W 74.53	257	S 8735008	W 74.53
247	S 8735008	W 74.53	258	S 8735008	W 74.53
248	S 8735008	W 74.53	259	S 8735008	W 74.53
249	S 8735008	W 74.53	260	S 8735008	W 74.53
250	S 8735008	W 74.53	261	S 8735008	W 74.53
251	S 8735008	W 74.53	262	S 8735008	W 74.53
252	S 8735008	W 74.53	263	S 8735008	W 74.53
253	S 8735008	W 74.53	264	S 8735008	W 74.53
254	S 8735008	W 74.53	265	S 8735008	W 74.53
255	S 8735008	W 74.53	266	S 8735008	W 74.53
256	S 8735008	W 74.53	267	S 8735008	W 74.53
257	S 8735008	W 74.53	268	S 8735008	W 74.53
258	S 8735008	W 74.53	269	S 8735008	W 74.53
259	S 8735008	W 74.53	270	S 8735008	W 74.53
260	S 8735008	W 74.53	271	S 8735008	W 74.53
261	S 8735008	W 74.53	272	S 8735008	W 74.53
262	S 8735008	W 74.53	273	S 8735008	W 74.53
263	S 8735008	W 74.53	274	S 8735008	W 74.53
264	S 8735008	W 74.53	275	S 8735008	W 74.53
265	S 8735008	W 74.53	276	S 8735008	W 74.53
266	S 8735008	W 74.53	277	S 8735008	W 74.53
267	S 8735008	W 74.53	278	S 8735008	W 74.53
268	S 8735008	W 74.53	279	S 8735008	W 74.53
269	S 8735008	W 74.53	280	S 8735008	W 74.53
270	S 8735008	W 74.53	281	S 8735008	W 74.53
271	S 8735008	W 74.53	282	S 8735008	